

FOR PARCEL NUMBER & ACREAGE SEE MAP 183.10-1-8

FOR REMAINDER OF PARCEL SEE MAP 183.06

1

ERIE COUNTY AGRICULTURAL SOCIETY
(ERIE COUNTY FAIRGROUNDS)

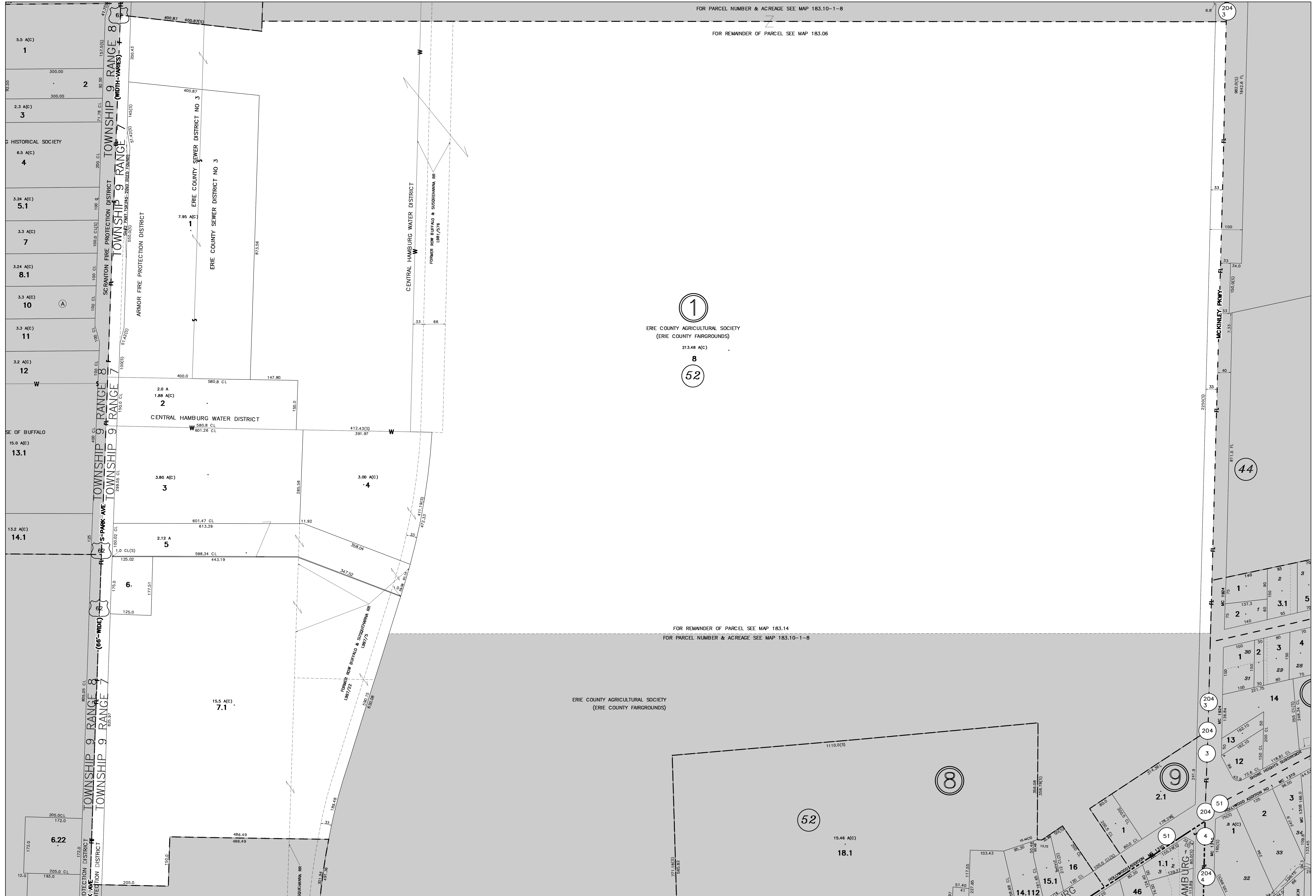
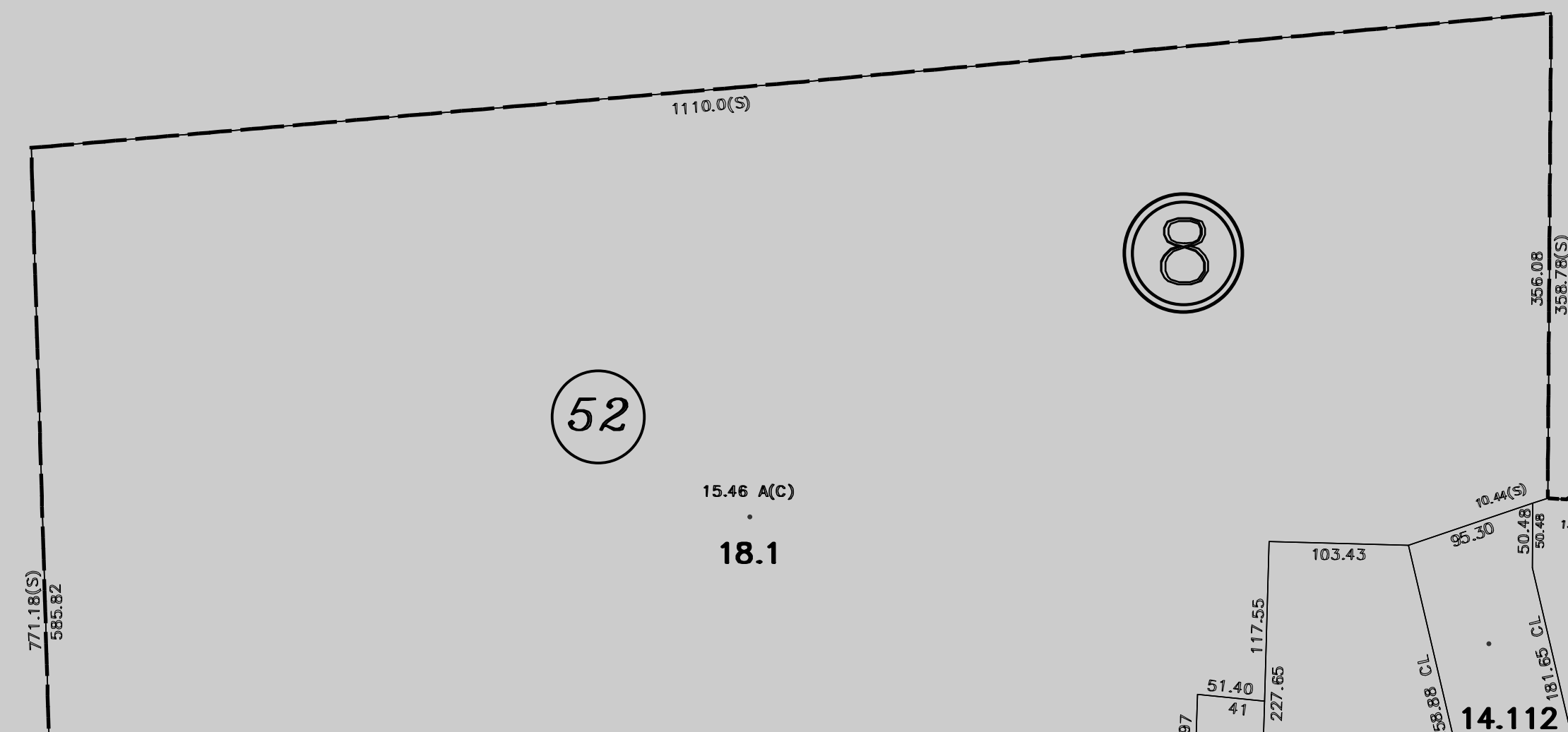
213.48 A(C)

8

52

FOR REMAINDER OF PARCEL SEE MAP 183.14
FOR PARCEL NUMBER & ACREAGE SEE MAP 183.10-1-8

ERIE COUNTY AGRICULTURAL SOCIETY
(ERIE COUNTY FAIRGROUNDS)



PREPARED BY
DIVISION OF REAL PROPERTY TAX SERVICES
ERIE COUNTY, NEW YORK

MAP CONVERTED TO GIS FORMAT BY BERGMANN ASSOCIATES (2011)
ORIGINAL MAP PREPARED BY AERD SERVICE (1999)

NOTES

THIS MAP WAS PREPARED FOR TAX PURPOSES ONLY AND IS NOT TO BE REPRODUCED OR USED FOR SURVEYING OR CONVEYANCING.

MAP PREVIOUSLY CONVERTED TO AUTOCAD DIGITAL FORMAT BY ANALYTICAL SURVEYS INC. IN COOPERATION WITH WEILER MAPPING INC. (1999)

REVISION TABLE

DATE	MADE BY	CHANGES OR ADDITIONS
7/21/2014	JCS	BLK. 1, 7 & 183.14-6-8 INTO 7.1

SPECIAL DISTRICTS

SCHOOL	DRAINAGE
HAMBURG CENTRAL	
ARMOR FIRE PROTECTION DIST	ERIE COUNTY DISTRICT NO 3
CENTRAL HAMBURG WATER DISTRICT	

LEGEND

PROPERTY LINE	TOWN LINE	FIRE DISTRICT LINE	CALCULATED ACREAGE
ORIGINAL SUBLOT LINE	VILLAGE LINE	DEWETTES COMMON OWNER	7.5 A(C)
RAILROAD	GREAT LOT LINE	TAX MAP BLOCK NO.	17.5 A
STREAM OR DITCH	SCHOOL DISTRICT LINE	TAX MAP PARCEL NO.	225 (S)
ROAD OR RAILROAD BNDY	WATER DISTRICT LINE	FILED PLAN LOT NO.	743.25(S)
COUNTY LINE	SEWER DISTRICT LINE	GREAT LOT NO.	173.33
			DEED DIMENSION (CENTER LINE)
			173.33 &
			COORDINATE LOCATOR
			•

SHEET INDEX

183.05	183.06	183.11
183.09	183.11	
183.13	183.14	183.15

TAX MAP
TOWN OF HAMBURG
ERIE COUNTY, NEW YORK

183.10
TOWNSHIP 9
RANGE 7

GRAPHIC SCALE
1" = 100'

MAP DATE: 7/8/2020