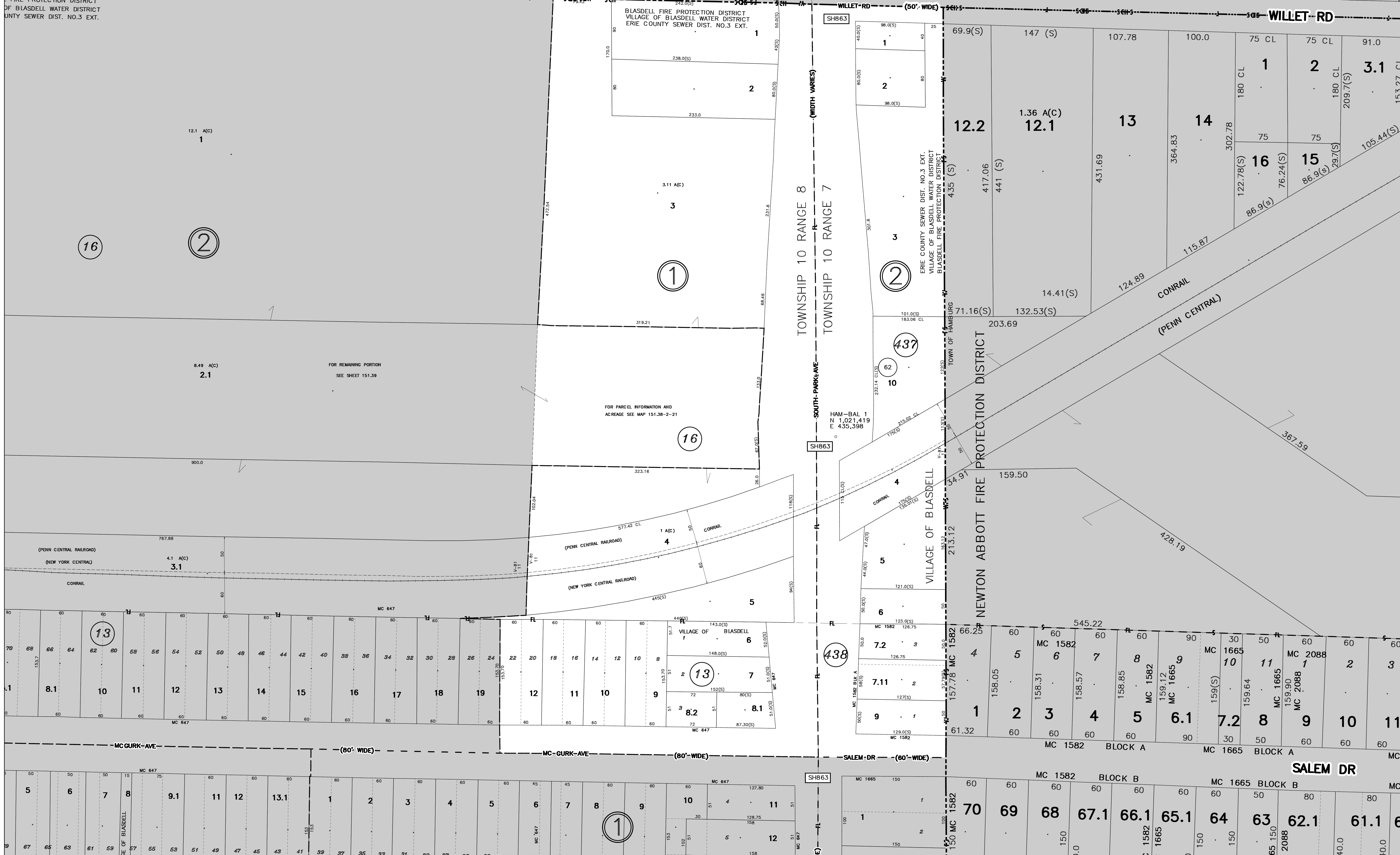


KAWANNA

CENTRAL SCHOOL DISTRICT
 FIRE PROTECTION DISTRICT
 VILLAGE OF BLASDELL WATER DISTRICT
 ERIE COUNTY SEWER DIST. NO.3 EXT.



PREPARED BY
DIVISION OF REAL PROPERTY TAX SERVICES
 ERIE COUNTY, NEW YORK
MAP CONVERTED TO GIS FORMAT BY BERGMANN ASSOCIATES (2011)
 ORIGINAL MAP PREPARED BY AERD SERVICE (1981)

NOTES
 THIS MAP WAS PREPARED FOR TAX PURPOSES ONLY
 AND IS NOT TO BE REPRODUCED OR USED FOR
 SURVEYING OR CONVEYANCING.
MAP PREVIOUSLY CONVERTED TO AUTOCAD DIGITAL FORMAT
 BY ANALYTICAL SURVEYS INC. IN COOPERATION
 WITH WEILER MAPPING INC. (1999)

REVISION TABLE		CHANGES OR ADDITIONS
DATE	MADE BY	
7/29/2000	MFF	BLK 1 (SPLIT 8.1 & 2)
8/20/1991	MFF	BLK 2 - (MERGE 7.1, 8 TO 7.11)
10/4/1988	MFF	BLK 2 - (7.1, 7.2)

SPECIAL DISTRICTS	
SCHOOL	FRONTIER CENTRAL
FIRE	BLASDELL
SEWER	VILLAGE OF BLASDELL
WATER	VILLAGE OF BLASDELL

LEGEND	
PROPERTY LINE	ORIGINAL SUBLOT LINE
RAILROAD	STREAM OR DITCH
ROAD OR RAILROAD BNDY	COUNTY LINE
TOWN LINE	VILLAGE LINE
BLOCK LIMIT	SCHOOL DISTRICT LINE
WATER DISTRICT LINE	SEWER DISTRICT LINE
FIRE DISTRICT LINE	GENETICS COMMON OWNER
TAX MAP BLOCK NO.	TAX MAP PARCEL NO.
FILED PLAN LOT NO.	GREAT LOT NO.

CALCULATED ACREAGE	
DIED ACREAGE	7.5 A(C)
SCALED DIMENSION	17.5 A
SCALED DIMENSION (CHECKED)	225 (S)
DIED DIMENSION (CENTER LINE)	743.25(S)
DEED DIMENSION (CENTER LINE)	173.33
COORDINATE LOCATOR	173.33

TAX MAP
VILLAGE OF BLASDELL
 ERIE COUNTY, NEW YORK
 GRAPHIC SCALE
 1" = 50'
 MAP DATE: 7/8/2020

SHEET INDEX	
151.38	151.10
151.47	151.47
151.10	151.10